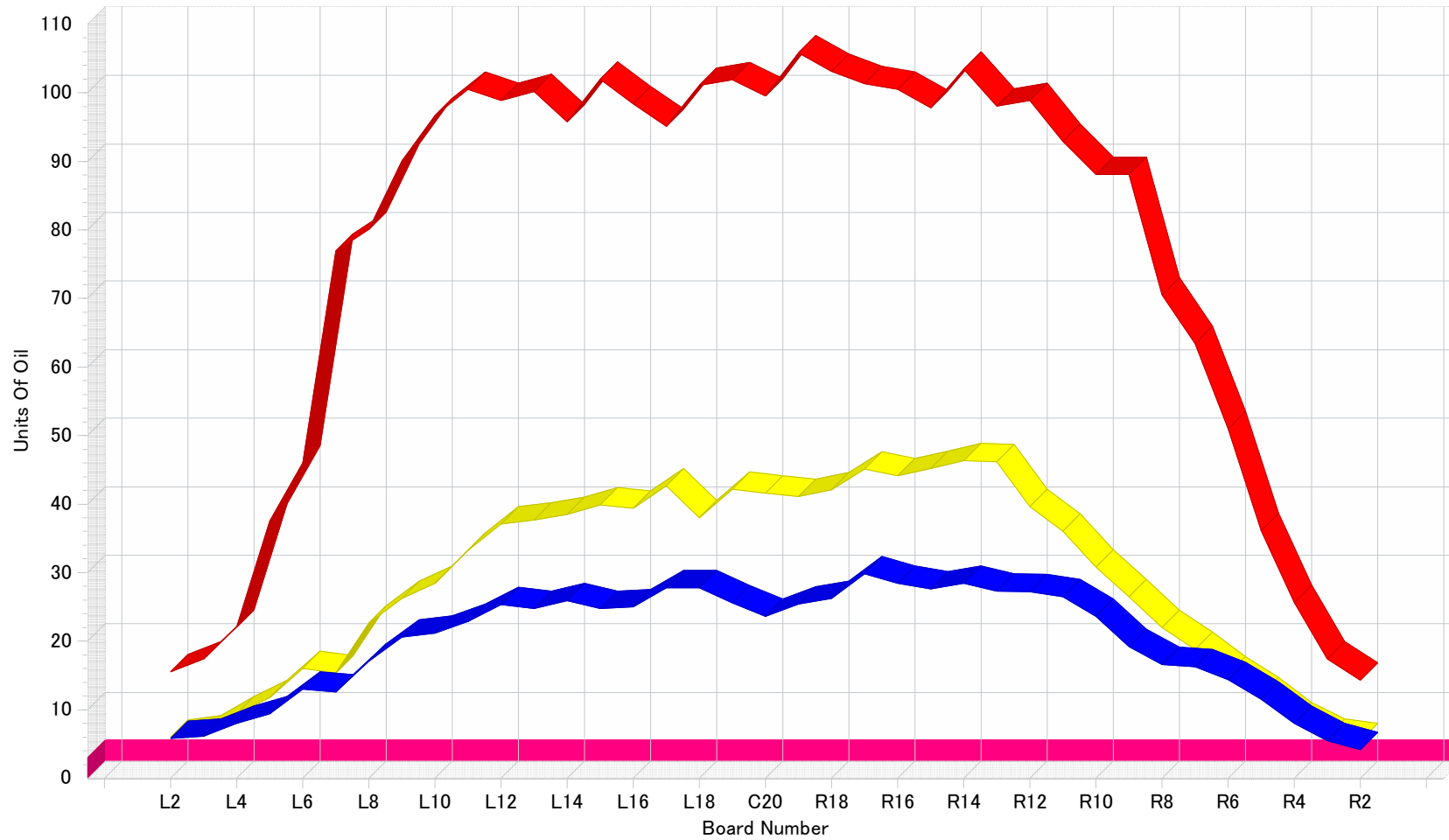


Brunswick Computer Lane Monitor™ Lane Dressing Analysis System

	Center Name	Lane #	Distance	Date	Comment
1	稲沢グランドボウル	5	8.0	2018/01/23	TepeReading19.5CCV1.50Low180
2	稲沢グランドボウル	5	22.0	2018/01/23	TepeReading19.5CCV1.50Low180
3	稲沢グランドボウル	5	40.0	2018/01/23	TepeReading19.5CCV1.50Low180

	1	2	3
L2	15.5	6.0	5.8
L3	17.4	6.6	6.1
L4	22.1	9.4	8.0
L5	37.5	11.8	9.4
L6	46.0	16.0	13.0
L7	76.9	15.4	12.6
L8	80.1	22.6	17.1
L9	90.1	26.2	20.6
L10	96.7	28.4	21.2
L11	100.5	33.3	22.9
L12	98.9	37.1	25.3
L13	100.2	37.7	24.8
L14	95.8	38.5	25.9
L15	102.0	39.9	24.8
L16	98.4	39.4	25.0
L17	95.1	42.7	27.8
L18	101.1	38.0	27.8
L19	101.9	42.2	25.6
C20	99.5	41.6	23.6
R19	105.8	41.1	25.4
R18	103.1	42.1	26.2
R17	101.3	45.1	29.8
R16	100.5	44.1	28.4
R15	97.8	45.2	27.6
R14	103.5	46.3	28.4
R13	98.1	46.2	27.3
R12	98.9	39.6	27.2
R11	92.9	36.0	26.5
R10	88.1	30.8	23.6
R9	88.1	26.5	19.2
R8	70.5	22.0	16.6
R7	63.4	18.8	16.3
R6	51.0	15.2	14.4
R5	36.1	12.2	11.5
R4	25.7	8.5	8.0
R3	17.4	6.1	5.5
R2	14.3	5.5	4.2



7 Pin Side

First Tape Reading
10 Pin Side